

COLLEGE OF APPLIED STUDIES

2019 ANNUAL REPORT



CONTENTS

ABOUT THE COLL G

.JTTJPO \$PSF 7BMVFT	d		d	dddd		d d
.FTTBHF GSPN UIF %FBO			d		dddddd	dd
-FBEFSTIJQ 5FB	d	d	d		dddddd	dd
/FX *OJUJBUJWFT	d				dddd	dd



A M SSAG FROM TH D AN

"T XF MPPL UPXBSE B OFX ZFBS * BN EFMJHIUFE UP TIBSF PVS BOOVBM SFQPSU
IJHIMJHIUJOH TPNF PG UIF BDUJWJUJFT JOJUJBUJWFT BOE BDDPNQMJTINFOUT PV
TUVFOUT FYQFSJFODFE UISPVHIPVU UIF QBTU ZFBS ` 8F CFHBO UIF ZFBS XJUI B N
*OUFOUMZ BOE 3FTQPOE "EFQUMZ 5IJT NPUUP UJFT UP PVS DPSF WBMVFT PG EJW
DPMMBCPSBUJPO EJTDPWFSZ BOE MFBEFSTIJQ XIJDI IBWF CFFO PVS HVJEJOH QP
BOE EFMJWFSJOH QSPHSBNT BOE JOJUJBUJWFT UIBU BSF NBLJOH BO JNQBDU BOE
OFFET JO PVS DPNNVOJUZ `

'PS UIF UIJSE ZFBS JO B SPX PVS DPMMFHF IBT DPOUJOVFE UP HSPX FOSPMNFOU
JODSFBTF TJODF `5IJT JODSFBTF JT B SFTVMU PG UIF XPSL PVS GBDVMUZ BOE
SFWJTJOH B MBSHF OVNCFS PG PVS FYJTUJOH QSPHSBNT BT XFMM BT EFWFMPQJ
FOTVSF XF DPOUJOVF UP SFTQPOE UP UIF OFFET PG PVS DPNNVOJUZ ` 8F DPOUJO
CVJMEJOH SFMBUJPOTIJQT UIBU HVJEF PVS FGGPSUT BOE FOTVSF XF DPOUJOVF U
PVS TUVFOUT `5IJT QBTU ZFBS PVS GBDVMUZ IBWF FOHBHFE JO OVNFSPT DPNN
BDUJWJUJFT UP DPNQMFNFOU UIFJS TDIPMBSTIJQ BOE JOTUSVDUJPOBM FOEFBWP
UIF MPDBM SFHJPOBM OBUJPOBM BOE JOUFSOBUJPOBM MFWFMT IBT SBJTFE UIF

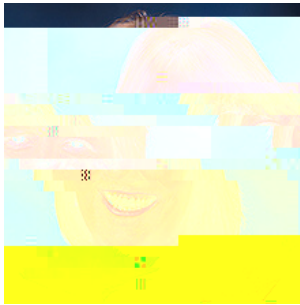
4UVEFOUT JO UIF DPMMFHF XFSF BMTF FOHBHFE JO OVNFSPT TFSWJDF BOE BQQ
PQQPSUVOJUJFT BOE XFSF SFDPHOJ[FE GPS UIFJS BDDPNQMJTINFOUT BT 5FBDIFS
4IPDLFS /FX 7FOUVSF \$PNQFUJUJPO XJOOFST BOE 4FOJPS)POPS SFDJQJFOUT

5IF \$"4 -FBEFSTIJQ UFBN GBDVMUZ TUBGG BOE TUVFOUT BSF B UBMFOUFE HSPV
EFNPOTUSBUF UIFJS DPNNJUNFOU UP NBLJOH B QPTJUJWF JNQBDU PO UIF MJWFT
CBTJT ` * BN HSBUFGVM UP FBI PG UIFN BT XFMM BT PVS BMVNOJ GSJFOET BOE E
PVS DPMMFHF BOE NBLF JU QPTTJCMF GPS VT UP DPOUJOVF UP TFSWF PVS DPNNV
``

* IPQF ZPV XJMM FOKPZ SFBEJOH BCPVU IPX XF BSF DPOUJOVJOH UP MJWF UIF NJT
BO FDPOPND ESJWFS GPS ,BOTBT BOE UIF HSFBUS QVCMJD BT XFMM BT QPTJUJWF
"QQMJFE 4UVEJFT GPS UIE GVUVSF

SHIRL Y L F V R, PHD

%FBO \$PMMFHF PG "QQMJFE 4UVEJFT



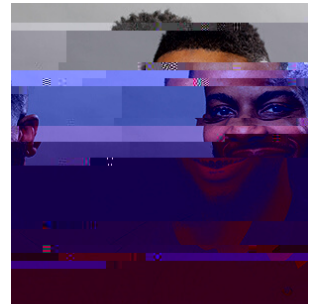
4IJSMFZ -FGWFWS
%FBO



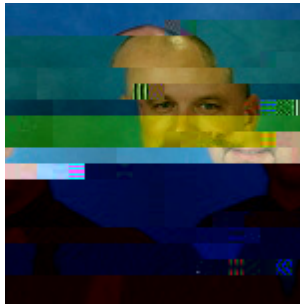
\$MBZ 4UPMEU
"TTPDJBUF %FBO



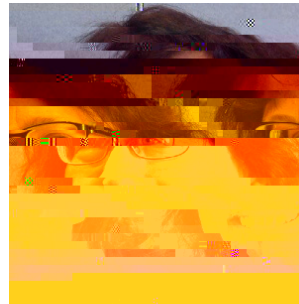
"TIMJF +BDL
"TTJTUBOU %FBO
"DDSFEJUBUJPO 0GGJDFS



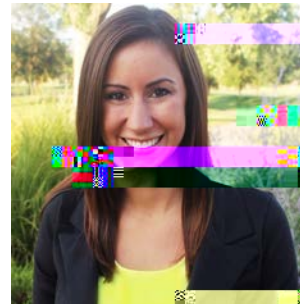
#PCCZ #FSSZ
5IF 'VTF



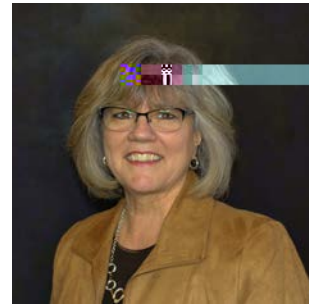
3JDI #PNHBSEOFS
)VNBO 1FSGPSNBODF
4UVEJFT



+PEZ 'JPSJOJ
\$-&4
4DIPPM PG &EVDBUJPO



,BZMB +BTTP
BSLFUJOH 0VUSFBDI



4IFSFOB -BOHMFZ

ACC L RAT D BACH LOR'S TO MAST R'S
IN X RCIS SCI NC



N W FAC S



VAL RI THOMPSON

Assistant Professor, Educational Psychology



DIL TORRES RIVERA

Professor & Director, Latinx Studies

&EJM IFBET VQ -BUJOY 4UVEJFT BU 846 JODMVEJOH UFB
BOE EFWFMPQJOH DVSSJDVMVN SFDSVJUJOH BOE IJSJ
DMVTUFS BOE GPTUFSJOH SFMBUJPOTIJQT XJUI UIF 846
8JDIJUB DPNNVOJUZ 1SJPS UP IJT UFBDIJOH DBSFFS &E
UIF "SNZ XIFSF IF XBT BO BNBUFVS CPYFS

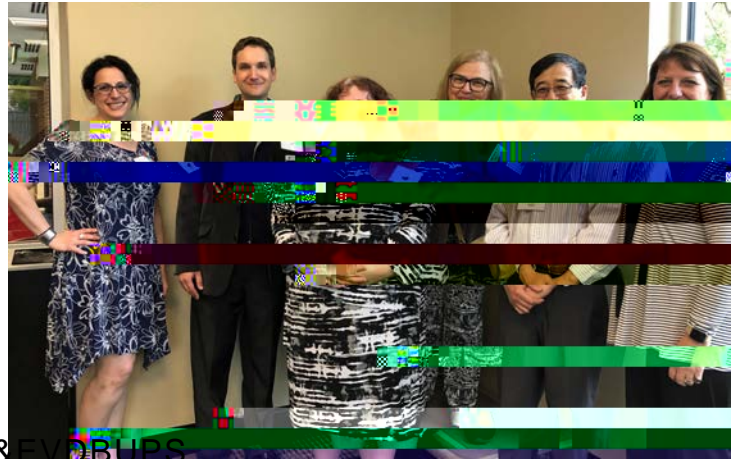


JILL WOOD

Coordinator, Teacher Apprentice Program

+JMM PWFSTFFT UIF SBQJEMZ HSPXJOH 5FBDIFS "QQSFO
1SPHSBN BU 846 "TJEF GSPN XPSLJOH XJUI TUVEFOUT
B NPUIFS PG BOE BMTF FOKPZT TQPSUT 4IF IBT CFFO G
PS DPBDIJOH WPMFZCBMM BOE CBTLFUCBMM GPS OFB

0VS DPMMFHF JT QSPVE UP CF IPNF UP EFEJDBUFE FOFSHFUJD BOE DPNNJUUFE
NFNCFST 5IFTF JOEJWJEVBMT BSF EFEJDBUFE UP FOTVSJOH PVS TUVEFOUT



- .BSB "MBHJD 1SPGFTTPS
- %BOJFM #FSHNBO 1SPGFTTPS
- +PEZ 'JPSJOJ 1SPGFTTPS
- 'VDIBOH -JV 1SPGFTTPS
- 7JDUPSJB 0QBMFXTLJ "TTPDJBUF &EVDBUPS
- +FOOJGFS 4UPOF "TTPDJBUF 1SPGFTTPS

COLL G AWARDS

0VUTUBOEJOH 4UBGG
4IFSJ #BSOFT)VNBO 1FSGPSNBODF 4UVEJFT

4FSWJDF
#PCCZ #FSSZ 4QPSU .BOBHFNFOU

5FDIOPMPHZ BOE *OOPWBUJPO
+BFIXBO #ZVO 4DIPPM PG &EVDBUJPO

&NPSZ -JOERVJTU
+BTPO)FSSPO \$-&4

3FTFBSDI
4PPO\$IVO -FF 4DIPPM PG &EVDBUJPO

5FBDIJOH
,SJTUJO 4IFSXPPE \$-&4

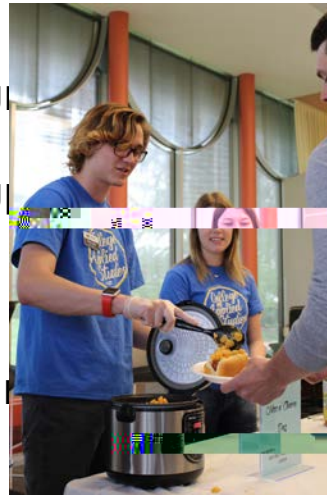
5FBD59.742 (F)4752 -59.826 (Z)-59.747 ()-59.891 (-)-59.7-149.936 (3)-1R:B 5

*5*0/(4)-14

456%&/54

03("/*; "5*0/4

- "UIMFUJD 5SBJOJOH 4UVEFOU "TTPDJJ
- \$"4 "NCBTTBEPST
- &YFSDJTF 4DJFODF 4UVEFOU 0SHBOJ
- (SBEVBUF "TTPDJBUJPO PG 4DIPPM 1TZDIPMPHJTUT
- ,MPTF 4UVEFOU 45&. "TTPDJBUJPO
- 4QPSU .BOBHFNFOU 4UVEFOU "TTPDJJ
- 5FBN ,



'*345 (&/&3"5*0/
\$0--&(& 456%&/54

065 0' 45"5&
456%&/54

(3"%6"5&4
*/

#: 5)& /6.#&34

5IJT GBMM TUVEFOUT XFSF FOSPMMFE JO UIF
\$PMMFHF PG "QQMJFE 4UVEJFT PG UIBU XFSF
VOEFHSBEVBUF TUVEFOUT BOE XFSF HSBEVBUF
TUVEFOUT

5IF MBSHFTU EFQBSUNFOU SFNBJOT UIF 4DIPPM PG
&EVDBUJPO 40& XJUI TUVEFOUT GPMMPXFE CZ
)VNBO 1FSGPSNBODF 4UVEJFT)14 \$PVOTFMJOH
&EVDBUJPOBM -FBEFSTIJQ &EVDBUJPOBM BOE 4DIPPM
1TZDIPMPHZ \$-&4 BOE 4QPSU .BOBHFNFOU
4.(5 SFTQFDUJWFMZ



Senior Honor is one of the most prest:

"NFSJDBO "UIMFUJD \$POGFSFODF (SBOU
%S 3JDI #PNHBSEOFS 3FUVSO UP -FBSO SFTFBSDI BOE
EFWFMPQNFOU

#VDL *OTUJUVUF GPS &EVDBUJPO 0VU PG UIF (BUF
1SPKFDU (SBOU
\$ISJT 8ZBOU #SJOHJOH DVUUJOH FEHF QFEBHPHZ USBJ
GBDVMUZ NFOUPS UFBDIFST JO 64% BOE QSF TFSWJ
UFBDIFST

/"4" ,BOTBT (SBOU \$POTPSUJVN
%S %BOOZ #FSHNBO \$BUIZ %VSBOP %S 4PPODIVO -FF
/PWBDL 5FBDIFS 8PSLTIPQ 06 (Q)-59.76 (Q)-59.701 ()-59.8 /T3



5IJT ZFBS XF XFSF BCMF UP BXBSE TDIPMBSTIJQT UP
TUEFOUT UPUBMJOH OFBSMZ



0OF OFX TDIPMBSTIJQ XBT TFDVSFE %FCSB , 4NJUI
4DIPMBSTIJQ 5IJT TDIPMBSTIJQ TVQQPSUT TUEFOUT JO UIF
5FBDIFS "QQSFOUJDF 1SPHSBN

456%&/54 3&\$&*7&%
4\$)0-"34)*14

0VS DPMMFHF FOHBHFT XJUI B OVNCFS PG DPNNVOJUZ QBSUOFST FBDI ZFBS)FSF
UIF QBSUOFSTIJQT GSPN UIJT ZFBS



\$3&%*5 6/*0/ 0' ".&3*\$"

8F TJHOFE B OVNCFS PG BSUJDVMBUJPO
BHSFFNFOUT XJUI DPNNVOJUZ DPMMFHF BOE
UFDIOJDBM TDIPPMT UP QSPWJEF B TFBNMFTT
USBOTGFS GPS TUVEFOUT XBOUJOH UP FBSO UIFJS
CBDIFMPS T EFHSFF BU 846 `

\$VSSFOU TDIPPMT XF IBWF BSUJDVMBUJPO
BHSFFNFOUT XJUI JODMVEF

- #VUMFS \$PNNVOJUZ \$PMMFHF
- (BSEFO \$JUJ \$PNNVOJUZ \$PMMFHF
- 846 5FDI





\$0--&(& 0' "11-*&% 456%*&4

8*\$)*5" &%6 \$"4] \$"4!8*\$)*5" &%6]



8JDIJUB 4UBUF 6OJWFSTJUZ EPFT OPU EJTDSJNJOBUF JO JUT FNQMPZNFUO QSBDUJDFT FEVDBUJPOBM QSPHSBNT PS BDUJ