





1/2



10

v n n

v n n

v n

v n n

v n n

n n n n

n n n n

n n

n v ...

$2 \times 4 \times 2$



439

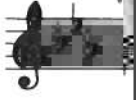
*ff sf sf sf sf*

447

*N*

2

middle  
v



n v v

n v v

v v

n v v n v v

**pp**

v

n

n

v

l

v

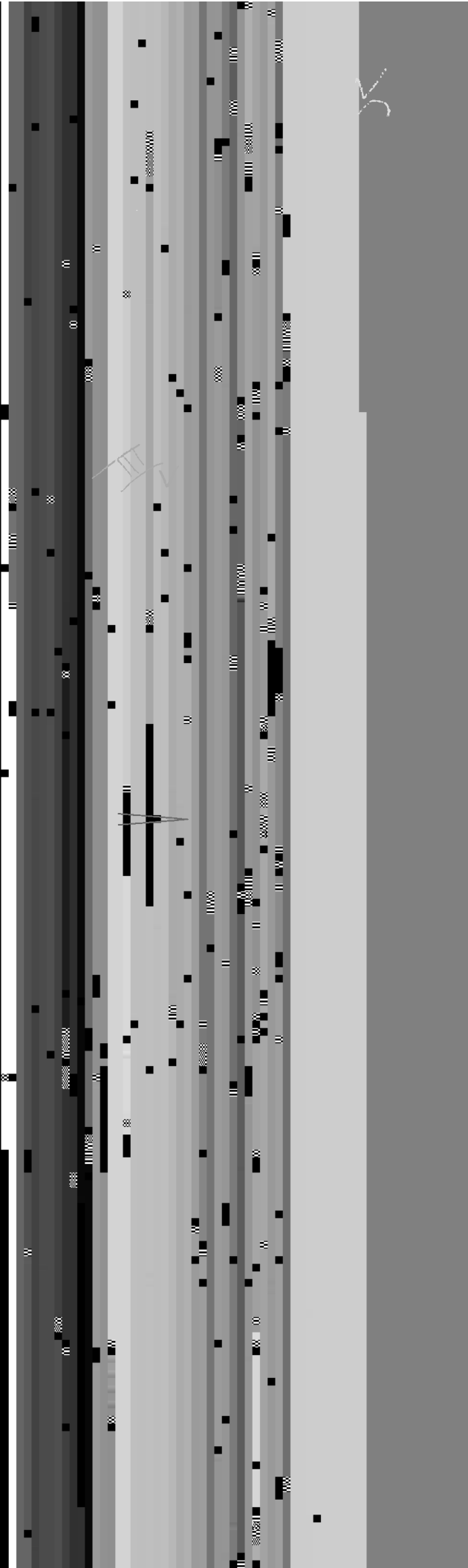
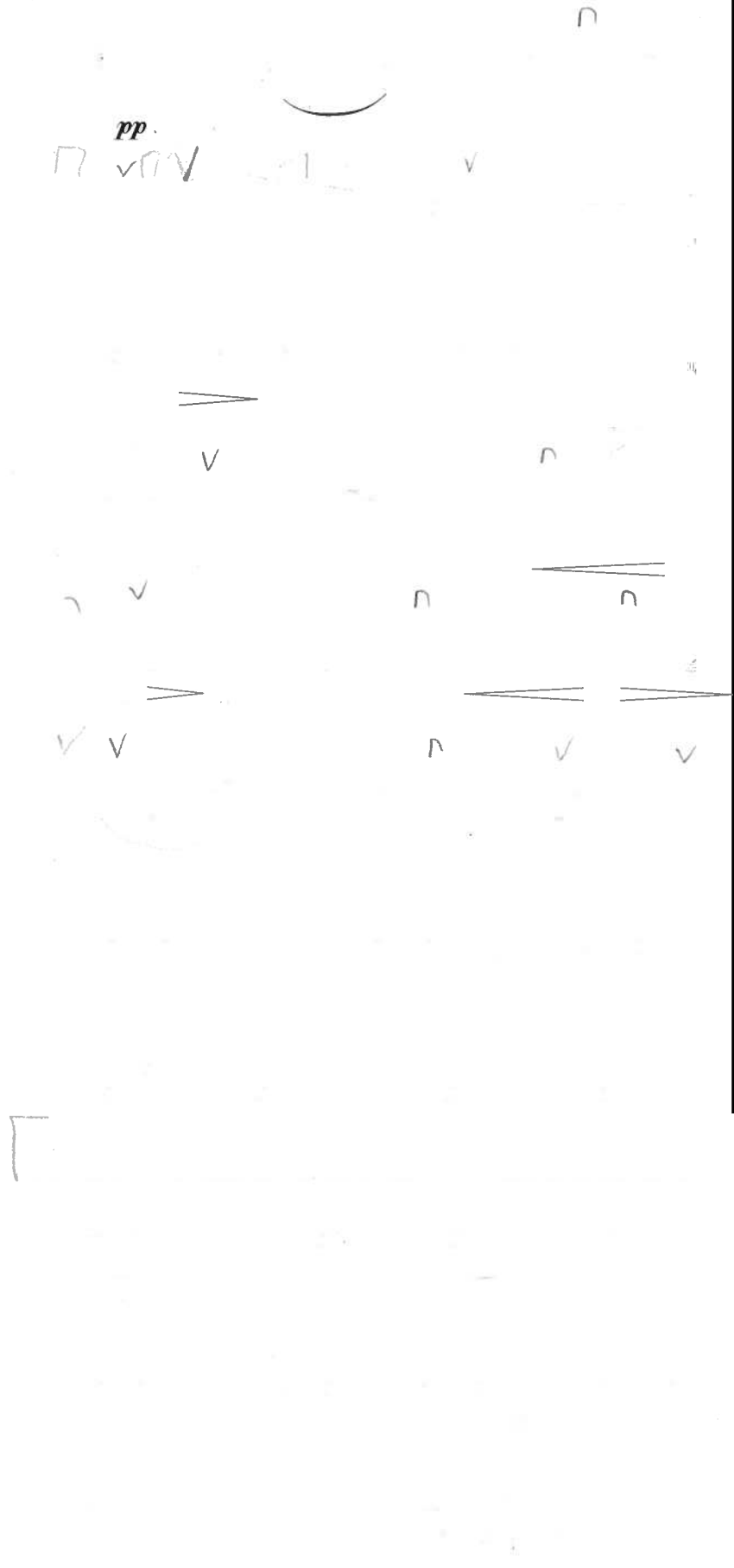
v

n

v

n





✓ ^

∩ ∨ ∩ ∨

→ ∩

6  
∩

||

U.F.

┌ 3 ─ ┐ *sempre*

∩

∨

∩



✓ ✓ UH

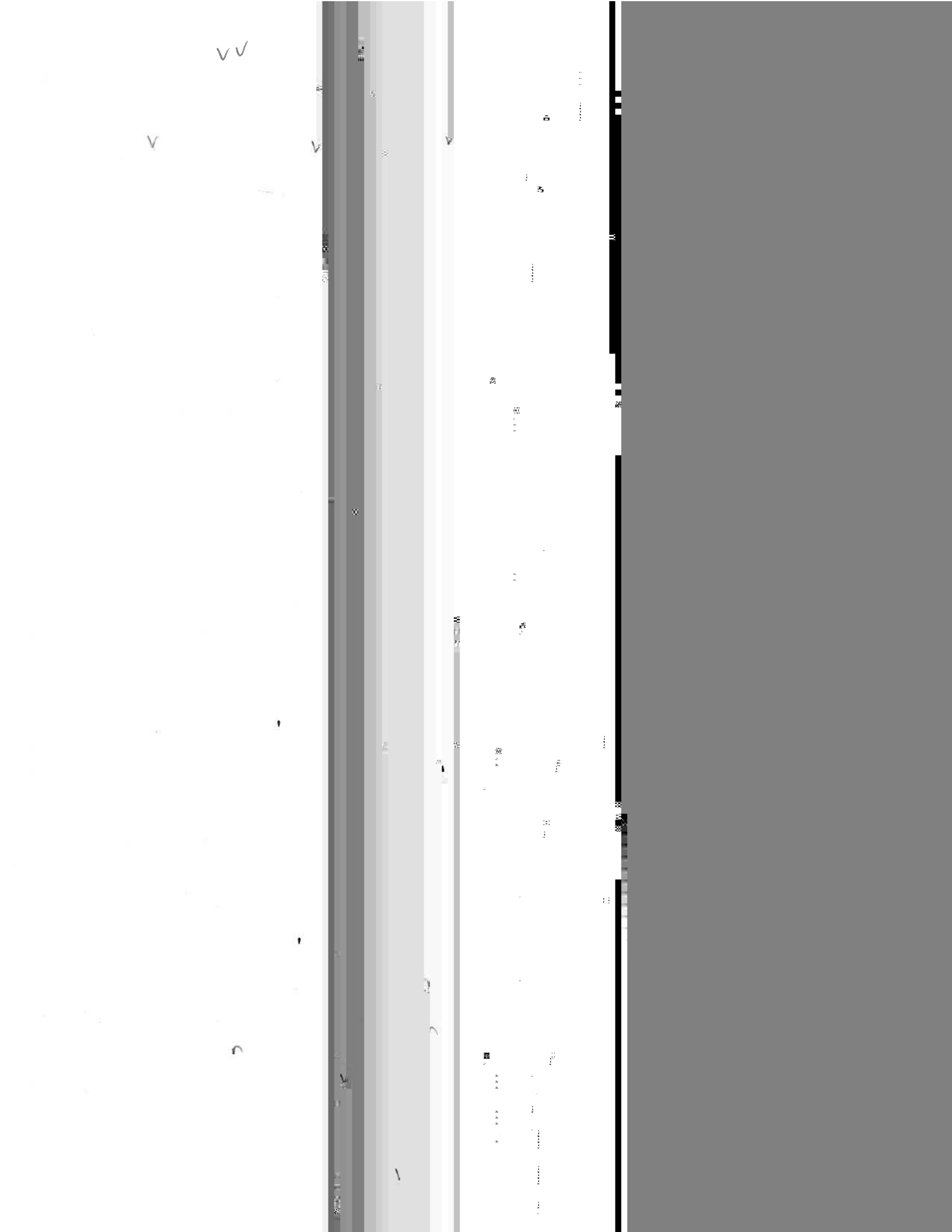
==

III

✓ F/n

vvv





v

u

n

v

n



*pp*

v

—

—

T

v

n

atya

atya



✓

✓

✓

✓

✓

✓

✓

OK

✓

✓

80

*cresc.* *sf* *decresc.* *f*

85

*sf*

L4  
v

v v v

□

*pl*

v v

v v v v

v v

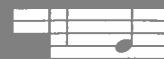
146



157



. b . q



cute



orla

2A



Handwritten musical notation including notes, rests, and dynamic markings such as *mf* and *ff*.



Handwritten musical notation including notes, rests, and dynamic markings such as *mf* and *ff*.

Handwritten musical notation including a slur and the marking *ce*.

Handwritten musical notation including notes and rests.

Handwritten musical notation including notes and rests.

Handwritten musical notation including notes and rests.

Handwritten musical notation including notes and rests.

Handwritten musical notation including notes and rests.

Handwritten musical notation including notes and rests.

Handwritten musical notation including notes and rests.

Handwritten musical notation including notes and rests.

Handwritten musical notation including notes and rests.

~~1/11/11~~ ✓

~~1/11/11~~

✓

V ✓

v v n

n v v

n

v v v n v

n n n n n sm

n n n n

V V

~~1/11/11~~

v n v

v n

— — — — —

